

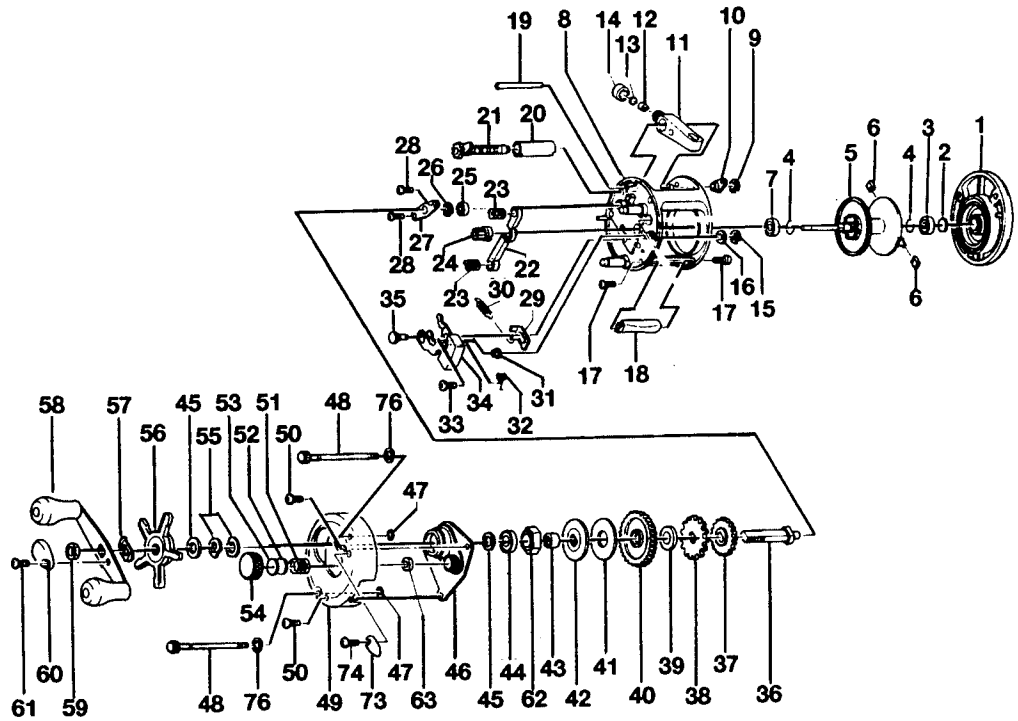
QUANTUM® IR4CXL

SPECIFICATIONS:

Express High-Speed
 Medium Freshwater
 Ultra Light Saltwater
 165 yds/12 lb. Line Capacity
 6.3:1 Ratio
 9.6 oz. Weight
 Thumb Button Clutch
 Continuous Anti-Reverse
 3 Ball Bearings
 1 Roller Bearing

FEATURES:

Centrifugal Brake Anti-Backlash System
 Machined, one-piece aluminum frame
 Rugged, one-piece aluminum side plates
 Machine-forged aluminum spool
 Brass Magnum Gears
 Low-profile recessed reel foot
 Multi-disc drag system
 On/Off bait click (wide spool models only)
 Color: Gold



| Key No. | Part No. | Description | Price | Key No. | Part No. | Description | Price |
|---------|----------|--------------------------------|-------|---------|----------|---------------------------|-------|
| 1 | EV324-02 | Right Side Cover Assy | 9.75 | 33 | XX050-01 | Screw - Release Slider | .15 |
| 2 | XX038-02 | Spool Shaft Washer | .26 | 34 | EV339-01 | Release Slider Assy | 1.80 |
| 3 | JX106-01 | Bearing - Spool Shaft | 6.33 | 35 | JX102-01 | Post - Kick Lever Guide | .88 |
| 4 | JX080-01 | Clip Ring | .26 | 36 | JX008-02 | Crank Shaft | 2.88 |
| 5 | EV321-01 | Spool Assy | 13.75 | 37 | JX112-01 | O/S Drive Gear | .46 |
| 6 | XX044-01 | Brake Shoe "B" | .26 | 38 | JX083-01 | Trip Ratchet | .93 |
| 7 | JX106-01 | Bearing - Spool Shaft | 6.33 | 39 | QW111-01 | Ratchet Washer | .26 |
| 8 | EV301-03 | Frame Assy | 29.65 | 40 | JV012-01 | Drive Gear | 7.65 |
| 9 | QW120-01 | E-Clip - Worm Shaft | .26 | 41 | JX059-01 | Drag Disc | 1.44 |
| 10 | JX067-01 | Bushing - Worm Shaft | .31 | 42 | JX045-01 | Drag "D" Washer | .88 |
| 11 | JX347-02 | Line Guide Carrier Assy | 2.32 | 43 | CW052-01 | Sleeve - One Way Bearing | 2.88 |
| 12 | JX006-01 | Line Guide Pawl | 1.80 | 44 | TW058-01 | Bearing - Crank Shaft (U) | 7.21 |
| 13 | JX035-01 | Washer - Line Guide Pawl | .26 | 45 | JX038-01 | Crank Shaft Washer | .31 |
| 14 | JX007-02 | Screw - Line Guide Carrier | .52 | 46 | EV066-01 | Crank Shaft Guide | 3.35 |
| 15 | NX092-01 | E-Clip - Kick Lever Guide Post | .30 | 47 | JX073-01 | O-Ring - Thumb Screw | .31 |
| 16 | XX035-01 | Washer - Kick Lever Guide | .26 | 48 | XX374-01 | Thumb Screw Assy | 1.24 |
| 17 | JX050-01 | Screw - Thumb Rest | .31 | 49 | EV023-03 | Left Side Cover | 13.55 |
| 18 | JX009-02 | Thumb Rest | .62 | 50 | QW123-01 | Screw - Left Side Cover | .15 |
| 19 | JX061-01 | Line Guide Carrier Guide | .98 | 51 | JX105-01 | Spring - Tension Knob | .31 |
| 20 | JX016-01 | Worm Shaft Guide | .72 | 52 | QW032-02 | Washer - Spool Tension | .26 |
| 21 | JX372-01 | Worm Shaft Assy | 6.90 | 53 | JX082-01 | Washer - Cushion | .21 |
| 22 | EV025-01 | Pinion Yoke | .55 | 54 | XX033-01 | Spool Tension Knob | 2.82 |
| 23 | JX040-01 | Yoke Spring | .21 | 55 | JX046-01 | Spring "D" Washer | .67 |
| 24 | JV011-01 | Pinion Gear | 5.40 | 56 | XX355-03 | Star Drag Assy | 3.45 |
| 25 | JX017-01 | Bushing - Crank Shaft (L) | .77 | 57 | NX054-01 | Handle Washer | .26 |
| 26 | QW120-01 | E-Clip - Crank Shaft | .26 | 58 | UW318-01 | Handle Assy | 7.00 |
| 27 | JX002-01 | Retainer - Crank Shaft | .57 | 59 | QW003-02 | Handle Nut | .36 |
| 28 | JX107-01 | Screw - Crank Shaft Retainer | .15 | 60 | JX034-02 | Handle Nut Cap | .36 |
| 29 | EV077-01 | Kick Lever | .60 | 61 | QW123-01 | Handle Nut Cap Screw | .15 |
| 30 | JX097-01 | Spring - Kick Lever | .15 | 62 | UQ063-02 | One Way Bearing | 9.27 |
| 31 | JX068-01 | Bushing - Release Slider Guide | 1.08 | 76 | JX121-01 | Washer - Thumb Screw | .21 |
| 32 | EV104-01 | Spring - Release Slider | .25 | | | | |

| | | | | | |
|-------------------------|------|---|-----------|---------------------|-----|
| MODEL INTRODUCED | 1996 | EFFECTIVE DATE OF PARTS LIST/DIAGRAM | Oct. 1996 | DISCONTINUED | N/A |
|-------------------------|------|---|-----------|---------------------|-----|

Prices subject to change without notice. Prices do not include postage and handling.

